
MEMORANDUM

TO: ALL BIDDERS **COMPANY:** N/A
FROM: I.B. STOREY INC.
SUBJECT: 24-021-ADDENDUM #1
DATE: 06-DEC-24

The following addendum is being provided for *24-021 Hamilton Detailed Specification and Drawings Package v1.0*

1- Addendum #1 Specification Adjustment

Was: Exhibit M: Detailed Specifications, page 9

2.1 Demolition
Scope of Work

- .1 The contractor is to remove and dispose the existing refrigeration plant equipment, refrigerant, and systems. The Owner will retain any noted refrigerant, equipment, piping and salvage, once removed, for use.
 - .1 This includes all existing ice rink refrigeration and rink heating equipment being replaced in the refrigeration plant conversion including all heat exchangers, pipes, valves, and fittings.
 - .2 All existing housekeeping pads for all removed equipment are to be removed and disposed except where noted.
 - .3 All refrigerant in the system is to be removed by the Contractor. Existing facility equipment is not to be used to pump-out the refrigerant.
 - .1 This includes the refrigerant in the plant.
 - .2 All refrigerant from the plant is to be stored on site for the owner to retain.
 - .4 The existing glycol in the cold and warm floors is to remain.



Is Now: Exhibit M: Detailed Specifications, page 9

- 2.1 Demolition Scope of Work**
- .2 The contractor is to remove and dispose the existing refrigeration plant equipment and systems. The contractor is to remove all existing refrigerant from the system. The Owner will retain any noted equipment, piping and salvage, once removed, for use.**
- .1 This includes all existing ice rink refrigeration and rink heating equipment being replaced in the refrigeration plant conversion including all heat exchangers, pipes, valves, and fittings.
 - .2 All existing housekeeping pads for all removed equipment are to be removed and disposed except where noted.
 - .3 **All existing refrigerant in the system is to be removed by the Contractor.** Existing facility equipment is not to be used to pump-out the refrigerant.
 - .1 This includes the refrigerant in the plant.
 - .2 **The contractor is to provide credit for the recovered refrigerant to the Owner.**
 - .4 The existing glycol in the cold and warm floors is to remain.

2- Addendum #1 Drawing Adjustment

Was: Exhibit N: Drawings Package PKG01,

- 24021 PKG01 REVISION LOG v2.0
- 24021 M-401 – EQUIPMENT LAYOUT v2.0
- 24021 M-403 – PLANT ROOM VIEWS v2.0
- 24021 MP401 – PLANT ROOM COOLING PIPING LARGE-SCALE VIEW v1.0
- 24021 MP403 – PLANT ROOM WARM PIPING LARGE-SCALE VIEW v1.0
- 24021 MP405 – PLANT ROOM RELIEF PIPING LARGE-SCALE VIEW v1.0
- 24021 S-703 – EQUIPMENT WEIGHTS & HOUSEKEEPING PADS v1.0

Is Now: Exhibit N: Drawings Package PKG01,

- 24021 PKG01 REVISION LOG v3.0
- 24021 M-401 – EQUIPMENT LAYOUT v3.0
- 24021 M-403 – PLANT ROOM VIEWS v3.0
- 24021 MP401 – PLANT ROOM COOLING PIPING LARGE-SCALE VIEW v2.0
- 24021 MP403 – PLANT ROOM WARM PIPING LARGE-SCALE VIEW v2.0
- 24021 MP405 – PLANT ROOM RELIEF PIPING LARGE-SCALE VIEW v2.0
- 24021 S-703 – EQUIPMENT WEIGHTS & HOUSEKEEPING PADS v2.0

- Replace all drawings in the **Was** list with the updated drawings in the **Is Now** list.

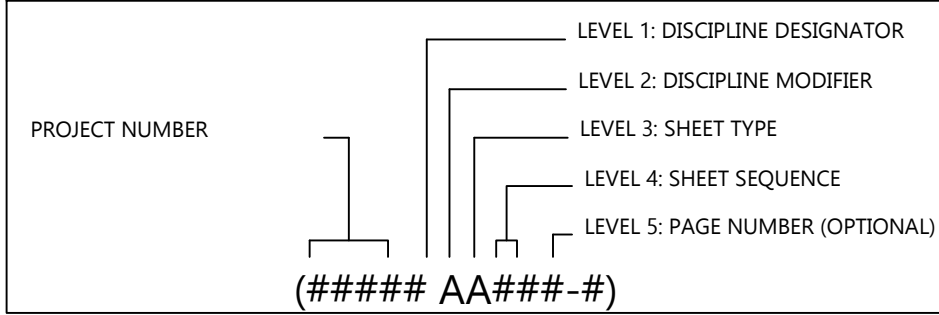


I.B. STOREY

Rink Engineering Experts

WWW.IBSTOREY.COM

IBS DRAWING SHEET DEFINITION



LEVEL 1 DISCIPLINE DESIGNATOR		LEVEL 2 DISCIPLINE MODIFIER		LEVEL 3 SHEET TYPE		LEVEL 4 SHEET SEQUENCE	
A	ARCHITECTURAL	-	MODIFIER NOT USED	0	GENERAL	01-99	SEQUENTIAL VALUE
B	GEOTECHNICAL	M	B BOARDS & GLASS	1	PLANS	ODD	DISTINCT DRAWINGS
C	CIVIL	D	DEMOLITION	2	ELEVATIONS	EVEN	MIRROR DRAWINGS
D	PROCESS	H	HVAC	3	SECTIONS		
E	ELECTRICAL	I	INSTRUMENTATION	4	LARGE-SCALE VIEWS		
F	FIRE PROTECTION	P	PIPING	5	DETAILS		
H	HAZARDOUS MATERIALS	R	RINK FLOOR	6	SCHEDULES & DIAGRAMS		
I	INTERIORS			7	COORDINATION		
L	LANDSCAPE			8	DESIGN STANDARD		
M	MECHANICAL			9	3D REPRESENTATIONS		
O	OPERATIONS						
P	PLUMBING						
Q	EQUIPMENT						
R	RESOURCE						
S	STRUCTURAL						
T	TELECOMMUNICATIONS						
V	SURVEY/MAPPING						
W	DISTRIBUTED ENERGY						
X	OTHER DISCIPLINES						
Z	CONTRACTOR/SHOP DRAWINGS						

IV3.0
IV3.0
IV3.0
IV3.0
IV3.0
IV3.0

IV3.0

REVISION LOG

DRAWING #	DRAWING NAME	VER:	ISSUED FOR:	DATE
24021 M-101	SCOPE DIVISION LAYOUT	VER: 1.0	ISSUED FOR TENDER	06-NOV-24
24021 M-601	SCHEMATICS & SCHEDULES	VER: 2.0	ISSUED FOR TENDER	06-NOV-24
24021 M-401	EQUIPMENT LAYOUT	VER: 3.0	EO #805	06-DEC-24
24021 M-403	PLANT ROOM VIEWS	VER: 3.0	EO #805	06-DEC-24
24021 M-901	PLANT ROOM ISO VIEW	VER: 2.0	ISSUED FOR TENDER	06-NOV-24
24021 MP401	PLANT ROOM COOLING PIPING LARGE-SCALE VIEW	VER: 2.0	EO #805	06-DEC-24
24021 MP403	PLANT ROOM WARM PIPING LARGE-SCALE VIEW	VER: 2.0	EO #805	06-DEC-24
24021 MP405	PLANT ROOM RELIEF PIPING LARGE-SCALE VIEW	VER: 2.0	EO #805	06-DEC-24
24021 MP901	COOLING PIPING ISOMETRIC VIEW	VER: 1.0	ISSUED FOR TENDER	08-NOV-24
24021 MP903	HEATING PIPING ISOMETRIC VIEW	VER: 1.0	ISSUED FOR TENDER	08-NOV-24
24021 MP905	RELIEF PIPING ISOMETRIC VIEW	VER: 1.0	ISSUED FOR TENDER	08-NOV-24
24021 M-603	BACKUP CONTROLLER SCHEMATIC	VER: 1.0	ISSUED FOR TENDER	08-NOV-24
24021 MI101	AUTOMATION PLAN	VER: 1.0	ISSUED FOR TENDER	08-NOV-24
24021 MI601	AUTOMATION SCHEMATICS	VER: 1.0	ISSUED FOR TENDER	08-NOV-24
24021 E-703	SINGLE LINE DIAGRAM	VER: 1.0	ISSUED FOR TENDER	08-NOV-24
24021 S-703	EQUIPMENT WEIGHTS & HOUSEKEEPING PADS	VER: 2.0	EO #805	06-DEC-24
IBSDS M801	GLYCOL RELIEF VALVES STANDARD	VER: 10.0	ISSUED FOR TENDER	30-AUG-24
IBSDS M805	AIR SEPARATOR STANDARD	VER: 12.0	ISSUED FOR TENDER	30-AUG-24
IBSDS M809	GLYCOL FEEDER STANDARD	VER: 10.0	ISSUED FOR TENDER	30-AUG-24
IBSDS M811	EXPANSION TANK STANDARD	VER: 11.0	ISSUED FOR TENDER	30-AUG-24
IBSDS M815	RENTAL CHILLER STANDARD	VER: 4.0	ISSUED FOR TENDER	27-MAR-24

PLEASE REMOVE THE FOLLOWING DRAWINGS:

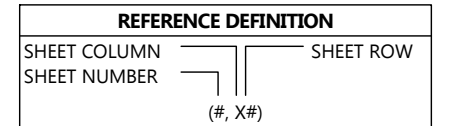
- 24021 PKG01 - REVISION LOG v2.0
- 24021 M-401 - EQUIPMENT LAYOUT v2.0
- 24021 M-403 - PLANT ROOM VIEWS v2.0
- 24021 MP401 - PLANT ROOM COOLING PIPING LARGE-SCALE VIEW v1.0
- 24021 MP403 - PLANT ROOM WARM PIPING LARGE-SCALE VIEW v1.0
- 24021 MP405 - PLANT ROOM RELIEF PIPING LARGE-SCALE VIEW v1.0
- 24021 S-703 - EQUIPMENT WEIGHTS & HOUSEKEEPING PADS v1.0

PLEASE REPLACE THE REMOVED DRAWINGS WITH THE FOLLOWING DRAWINGS:

- 24021 PKG01 - REVISION LOG v3.0
- 24021 M-401 - EQUIPMENT LAYOUT v3.0
- 24021 M-403 - PLANT ROOM VIEWS v3.0
- 24021 MP401 - PLANT ROOM COOLING PIPING LARGE-SCALE VIEW v2.0
- 24021 MP403 - PLANT ROOM WARM PIPING LARGE-SCALE VIEW v2.0
- 24021 MP405 - PLANT ROOM RELIEF PIPING LARGE-SCALE VIEW v2.0
- 24021 S-703 - EQUIPMENT WEIGHTS & HOUSEKEEPING PADS v2.0

REVISION LOG

NOTES



COPYRIGHT AND DISCLAIMER

THIS WORK IS THE SOLE PROPERTY OF I.B. STOREY INC AND IS INTENDED SOLELY FOR THE INFORMATION OF THE CLIENT. ALL RIGHTS RESERVED. THE WORK MAY NOT BE REPRODUCED OR DISTRIBUTED, WHOLE OR IN PART, WITHOUT THE PRIOR WRITTEN PERMISSION OF I.B. STOREY INC. THIS DOCUMENT MAY NOT BE USED FOR ANY OTHER PROJECTS OR WITHOUT INVOLVEMENT OF I.B. STOREY INC. ANY USE WHICH A THIRD PARTY MAKES OF THE WORK, OR ANY RELIANCE ON OR DECISIONS TO BE MADE BASED ON IT, ARE THE RESPONSIBILITY OF SUCH THIRD PARTIES.

- NOT FOR CONSTRUCTION -
CONFIDENTIAL & PROPRIETARY

VER #	REVISIONS	DATE	BY
3.0	EO #805	06-DEC-24	H.A.
2.0	ISSUED FOR TENDER	08-NOV-24	H.D.
1.0	ISSUED FOR CONCEPTUAL DESIGN	21-OCT-24	H.A.



CHARLOTTETOWN PE
VAUGHAN ON
REDINGTON SHORES FL
PLANO TX

WWW.IBSTOREY.COM

STAMP	
DRAWING NUMBER	24021 PKG01
DRAWING NAME	REVISION LOG
CLIENT	COLUMBUS PARKS & RECREATION
PROJECT	HAMILTON CC & ICE ARENA - PLANT CONVERSION
DRAWN BY	H.AKAR
CHECKED BY	J.RITCHIE
DATE	06-DEC-24
REVISION	3.0
SHEET SIZE	C
SHEET NO.	1 OF 1

24021 PKG01

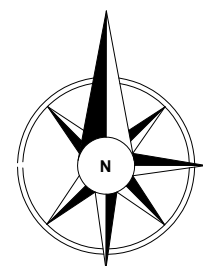
1

2

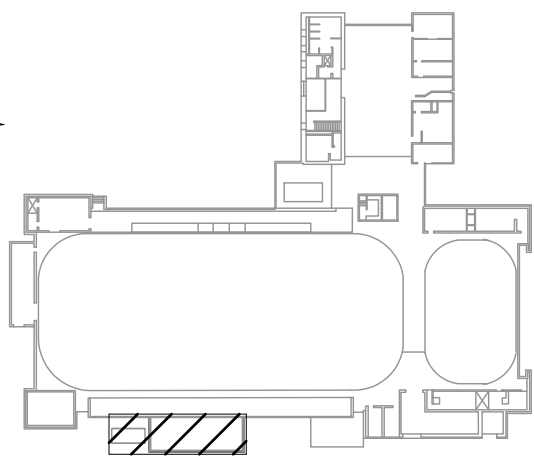
3

4

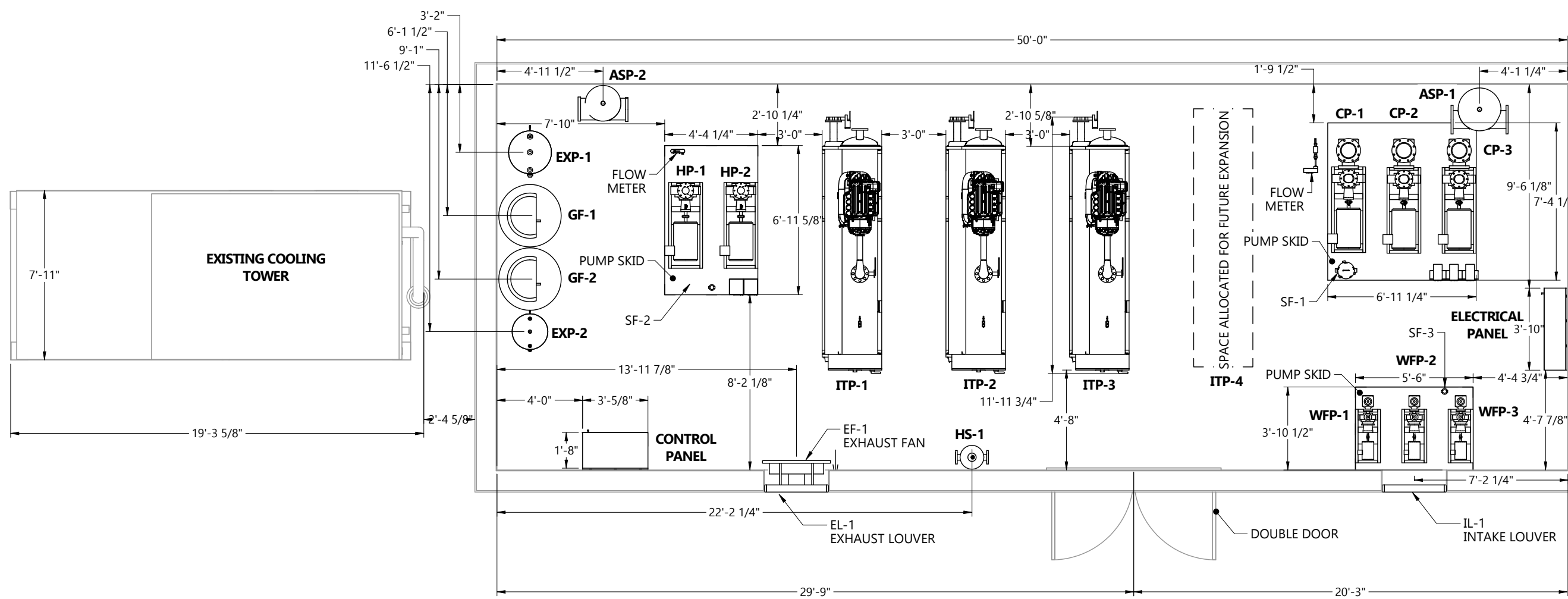
5



SITE KEY



1 A
SECTION VIEW A-A
M-403 (1,A4)



EQUIPMENT LAYOUT
SCALE 3/16" = 1'-0"

NOTES:

- ALL PUMP SKID SHOULD HAVE THICKNESS OF 4"
- ALL PIPING HIDDEN FOR CLARITY

EQUIPMENT LAYOUT

NOTES

REFERENCE DEFINITION	
SHEET COLUMN	SHEET ROW
SHEET NUMBER	(#, X#)

COPYRIGHT AND DISCLAIMER
THIS WORK IS THE SOLE PROPERTY OF I.B. STOREY INC AND IS INTENDED SOLELY FOR THE INFORMATION OF THE CLIENT. ALL RIGHTS RESERVED. THE WORK MAY NOT BE REPRODUCED OR DISTRIBUTED, WHOLE OR IN PART, WITHOUT THE PRIOR WRITTEN PERMISSION OF I.B. STOREY INC.
THIS DOCUMENT MAY NOT BE USED FOR ANY OTHER PROJECTS OR WITHOUT INVOLVEMENT OF I.B. STOREY INC. ANY USE WHICH A THIRD PARTY MAKES OF THE WORK, OR ANY RELIANCE ON OR DECISIONS TO BE MADE BASED ON IT, ARE THE RESPONSIBILITY OF SUCH THIRD PARTIES.

- NOT FOR CONSTRUCTION -
CONFIDENTIAL & PROPRIETARY

VER #	REVISIONS	DATE	BY
3.0	EO#805	06-DEC-24	H.D.
2.0	ISSUED FOR TENDER	08-NOV-24	R.T.
1.0	ISSUED FOR CONCEPTUAL DESIGN	21-OCT-24	H.D.



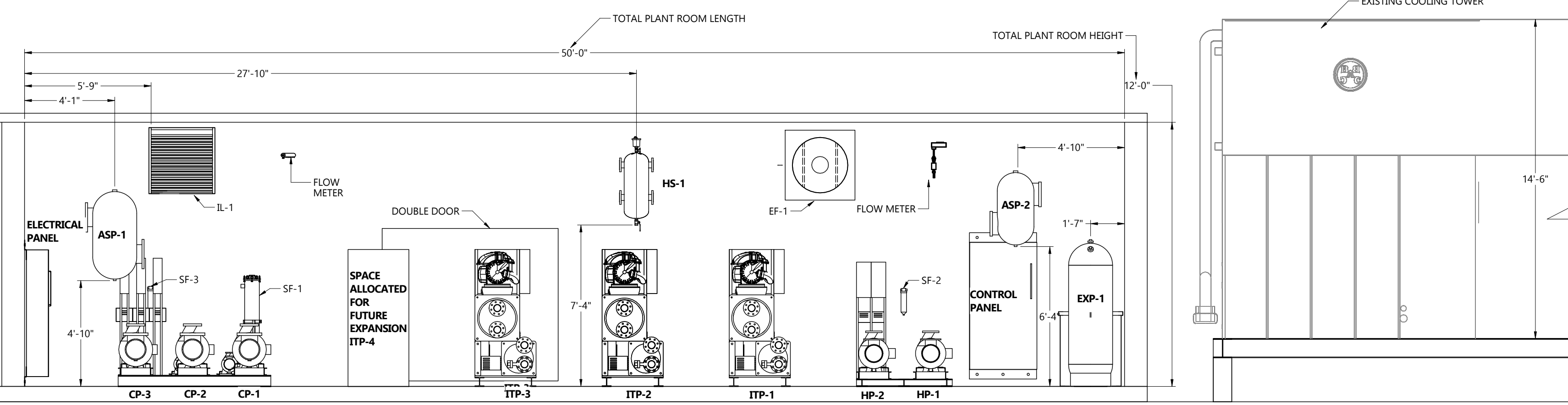
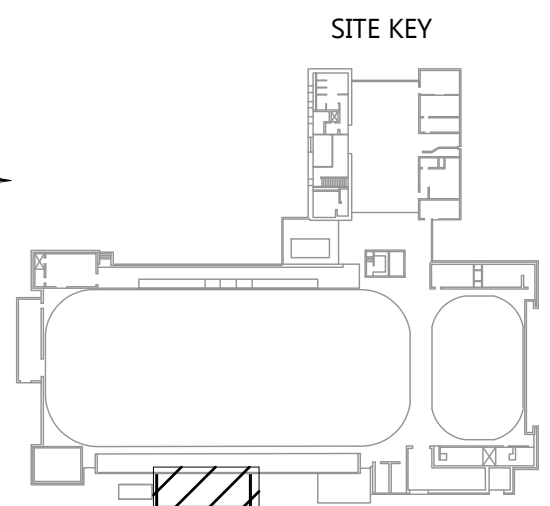
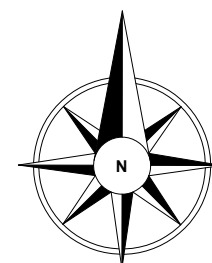
CHARLOTTETOWN PE
VAUGHAN ON
REDINGTON SHORES FL
PLANO, TX

WWW.IBSTOREY.COM

STAMP

DRAWING NUMBER		24021 M-401	
DRAWING NAME		EQUIPMENT LAYOUT	
CLIENT		COLUMBUS PARKS & RECREATION	
PROJECT		HAMILTON CC & ICE ARENA PLANT CONVERSION	
DRAWN BY	H.DHAMELIYA	CHECKED BY	J.RITCHIE
DATE	06-DEC-24	REVISION	3.0
SHEET SIZE	C	SHEET NO.	1 OF 1

24021 M-401



SECTION VIEW A-A 180° (M-401-1, A3): PLANT ROOM FRONT VIEW
SCALE 1/4"=1'-0"

FRONT VIEW

NOTES

---	NEW
---	EXISTING

REFERENCE DEFINITION

SHEET COLUMN	SHEET ROW
SHEET NUMBER	(#, X#)

COPYRIGHT AND DISCLAIMER
 THIS WORK IS THE SOLE PROPERTY OF I.B. STOREY INC AND IS INTENDED SOLELY FOR THE INFORMATION OF THE CLIENT. ALL RIGHTS RESERVED. THE WORK MAY NOT BE REPRODUCED OR DISTRIBUTED, WHOLE OR IN PART, WITHOUT THE PRIOR WRITTEN PERMISSION OF I.B. STOREY INC.
 THIS DOCUMENT MAY NOT BE USED FOR ANY OTHER PROJECTS OR WITHOUT INVOLVEMENT OF I.B. STOREY INC. ANY USE WHICH A THIRD PARTY MAKES OF THE WORK, OR ANY RELIANCE ON OR DECISIONS TO BE MADE BASED ON IT, ARE THE RESPONSIBILITY OF SUCH THIRD PARTIES.

- NOT FOR CONSTRUCTION -
CONFIDENTIAL & PROPRIETARY

VER #	REVISIONS	DATE	BY
3.0	EO#805	06-DEC-24	H.D
2.0	ISSUED FOR TENDER	08-NOV-24	H.D
1.0	ISSUED FOR CONCEPTUAL DESIGN	21-OCT-24	H.D



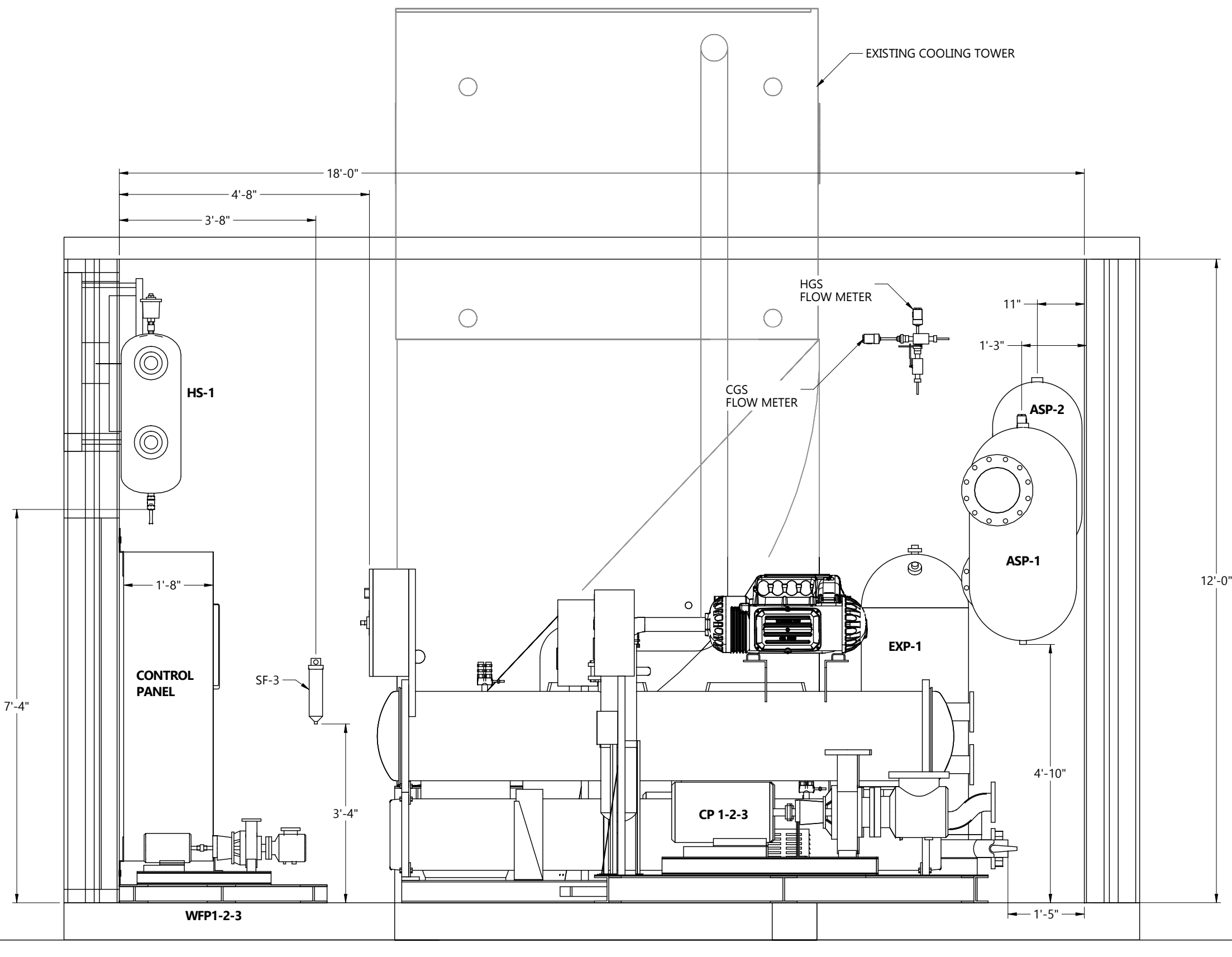
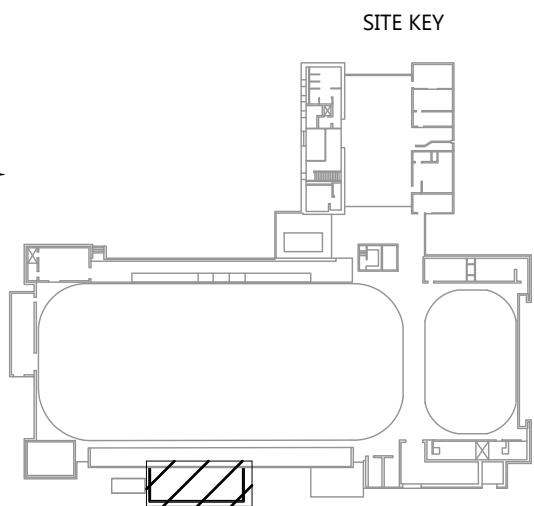
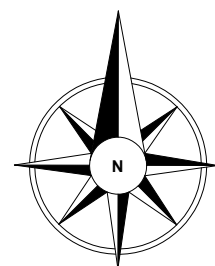
CHARLOTTETOWN PE
 VAUGHAN ON
 REDINGTON SHORES FL
 PLANO TX

WWW.IBSTOREY.COM

STAMP

DRAWING NUMBER	
24021 M-403	
DRAWING NAME	
PLANT ROOM VIEWS	
CLIENT	
COLUMBUS PARKS & RECREATION	
PROJECT	
HAMILTON CC & ICE ARENA PLANT CONVERSION	
DRAWN BY	CHECKED BY
H.DHAMELIYA	J.RITCHIE
DATE	REVISION
06-DEC-24	3.0
SHEET SIZE	SHEET NO.
C	1 OF 2

24021 M-403



SIDE VIEW

SECTION VIEW B-B 90° (M-401-1, D2): PLANT ROOM SIDE VIEW

SCALE 1/2" = 1'-0"

NOTES

---	NEW
---	EXISTING

REFERENCE DEFINITION	
SHEET COLUMN	SHEET ROW
SHEET NUMBER	(#, X#)

COPYRIGHT AND DISCLAIMER
 THIS WORK IS THE SOLE PROPERTY OF I.B. STOREY INC AND IS INTENDED SOLELY FOR THE INFORMATION OF THE CLIENT. ALL RIGHTS RESERVED. THE WORK MAY NOT BE REPRODUCED OR DISTRIBUTED, WHOLE OR IN PART, WITHOUT THE PRIOR WRITTEN PERMISSION OF I.B. STOREY INC.
 THIS DOCUMENT MAY NOT BE USED FOR ANY OTHER PROJECTS OR WITHOUT INVOLVEMENT OF I.B. STOREY INC. ANY USE WHICH A THIRD PARTY MAKES OF THE WORK, OR ANY RELIANCE ON OR DECISIONS TO BE MADE BASED ON IT, ARE THE RESPONSIBILITY OF SUCH THIRD PARTIES.

- NOT FOR CONSTRUCTION -
CONFIDENTIAL & PROPRIETARY

3.0	EO#805	06-DEC-24	H.D
2.0	ISSUED FOR TENDER	08-NOV-24	H.D
1.0	ISSUED FOR CONCEPTUAL DESIGN	21-OCT-24	H.D
VER #	REVISIONS	DATE	BY



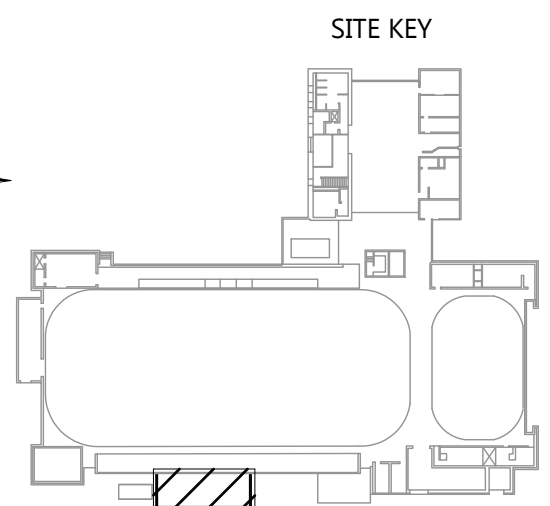
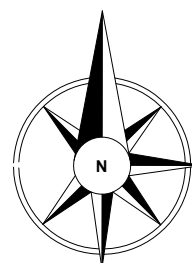
CHARLOTTETOWN PE
 VAUGHAN ON
 REDINGTON SHORES FL
 PLANO TX

WWW.IBSTOREY.COM

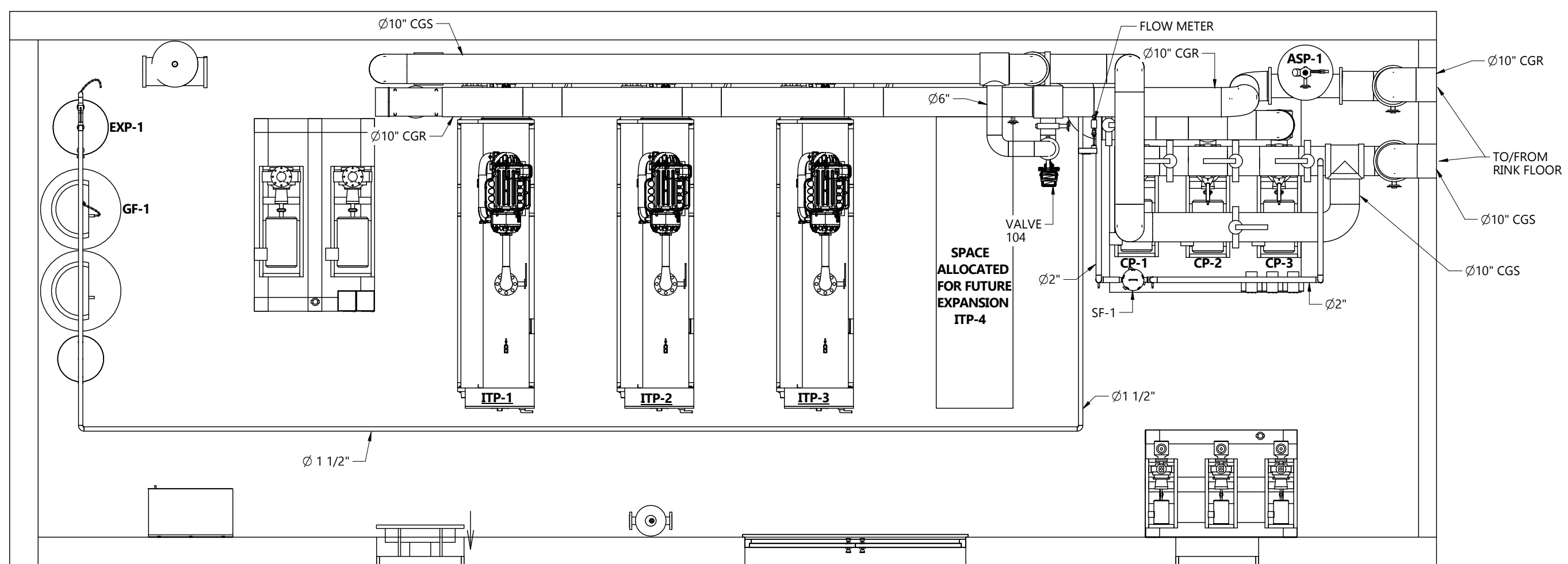
STAMP	

DRAWING NUMBER		24021 M-403
DRAWING NAME		PLANT ROOM VIEWS
CLIENT		COLUMBUS PARKS & RECREATION
PROJECT		HAMILTON CC & ICE ARENA PLANT CONVERSION
DRAWN BY	CHECKED BY	
H.DHAMELIYA	J.RITCHIE	
DATE	REVISION	
06-DEC-24	3.0	
SHEET SIZE	SHEET NO.	
C	2 OF 2	

24021 M-403



SECTION VIEW C-C
MP401 (2,A3)



COOLING PIPING PLAN
SCALE 1/4" = 1'-0"

SECTION VIEW D-D
MP401 (2,A5)

COOLING PIPING PLAN

NOTES

---	NEW
---	EXISTING

REFERENCE DEFINITION

SHEET COLUMN	SHEET ROW
(#, X#)	

COPYRIGHT AND DISCLAIMER
THIS WORK IS THE SOLE PROPERTY OF I.B. STOREY INC AND IS INTENDED SOLELY FOR THE INFORMATION OF THE CLIENT. ALL RIGHTS RESERVED. THE WORK MAY NOT BE REPRODUCED OR DISTRIBUTED, WHOLE OR IN PART, WITHOUT THE PRIOR WRITTEN PERMISSION OF I.B. STOREY INC.
THIS DOCUMENT MAY NOT BE USED FOR ANY OTHER PROJECTS OR WITHOUT INVOLVEMENT OF I.B. STOREY INC. ANY USE WHICH A THIRD PARTY MAKES OF THE WORK, OR ANY RELIANCE ON OR DECISIONS TO BE MADE BASED ON IT, ARE THE RESPONSIBILITY OF SUCH THIRD PARTIES.

- NOT FOR CONSTRUCTION -
CONFIDENTIAL & PROPRIETARY

2.0	EO#805	06-DEC-24	H.D.
1.0	ISSUED FOR TENDER	08-NOV-24	H.D.
VER #	REVISIONS	DATE	BY



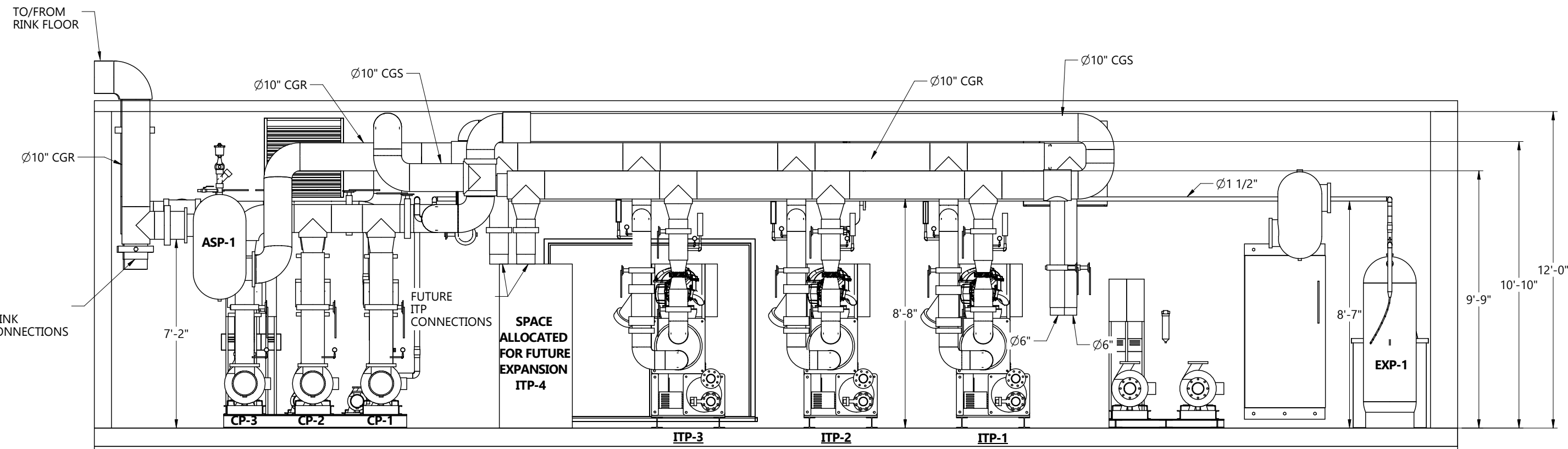
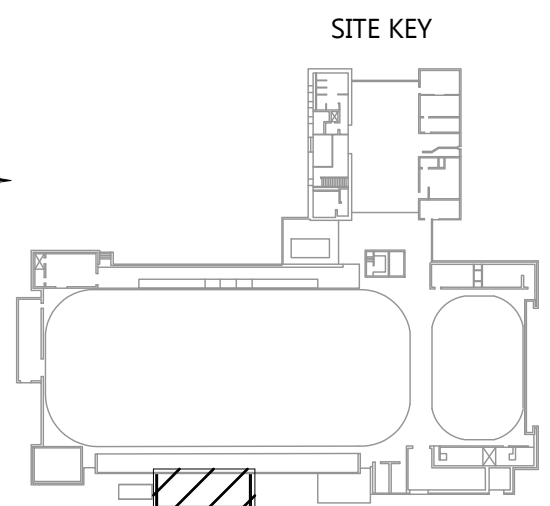
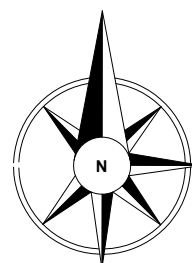
CHARLOTTETOWN PE
VAUGHAN ON
REDINGTON SHORES FL
PLANO TX

WWW.IBSTOREY.COM

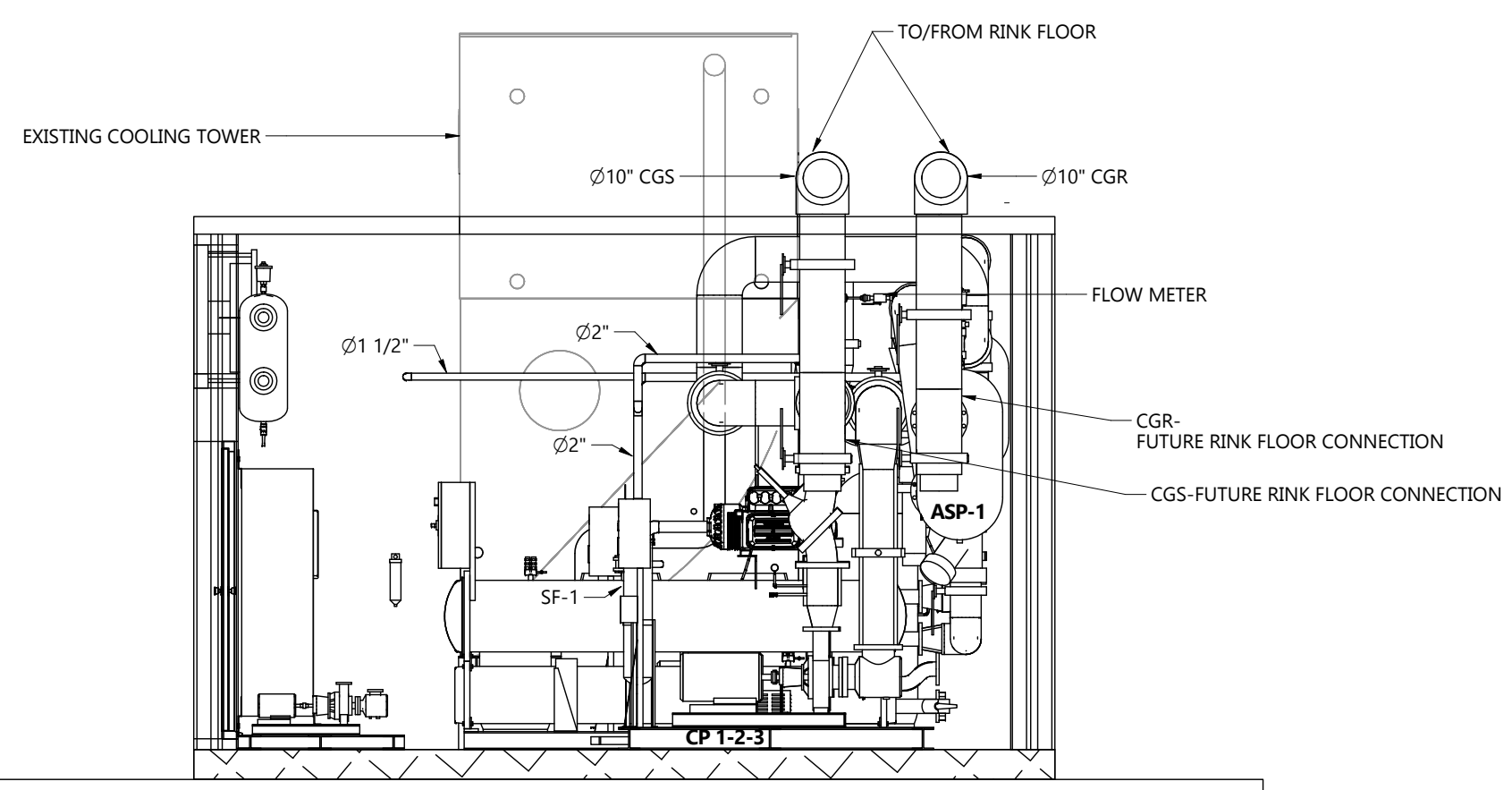
STAMP

DRAWING NUMBER		24021 MP401	
DRAWING NAME		PLANT ROOM COOLING PIPING LARGE SCALE VIEWS	
CLIENT		COLUMBUS PARKS & RECREATION	
PROJECT		HAMILTON CC & ICE ARENA PLANT CONVERSION	
DRAWN BY	H.DHAMELIYA	CHECKED BY	J.RITCHIE
DATE	06-DEC-24	REVISION	2.0
SHEET SIZE	C	SHEET NO.	1 OF 2

24021 MP401



SECTION VIEW C-C 180° (MP401.1.A2)
 V2.0 SCALE 1/4"=1'-0"



SECTION VIEW D-D 90° (MP401.1.D4)
 V2.0 SCALE 1/4"=1'-0"

COOLING PIPING SECTION VIEWS

NOTES

---	NEW
---	EXISTING

REFERENCE DEFINITION

SHEET COLUMN	SHEET ROW
SHEET NUMBER	(#, X#)

COPYRIGHT AND DISCLAIMER
 THIS WORK IS THE SOLE PROPERTY OF I.B. STOREY INC AND IS INTENDED SOLELY FOR THE INFORMATION OF THE CLIENT. ALL RIGHTS RESERVED. THE WORK MAY NOT BE REPRODUCED OR DISTRIBUTED, WHOLE OR IN PART, WITHOUT THE PRIOR WRITTEN PERMISSION OF I.B. STOREY INC.
 THIS DOCUMENT MAY NOT BE USED FOR ANY OTHER PROJECTS OR WITHOUT INVOLVEMENT OF I.B. STOREY INC. ANY USE WHICH A THIRD PARTY MAKES OF THE WORK, OR ANY RELIANCE ON OR DECISIONS TO BE MADE BASED ON IT, ARE THE RESPONSIBILITY OF SUCH THIRD PARTIES.

- NOT FOR CONSTRUCTION -
 CONFIDENTIAL & PROPRIETARY

VER #	REVISIONS	DATE	BY
2.0	EO#805	06-DEC-24	H.D.
1.0	ISSUED FOR TENDER	08-NOV-24	H.D.



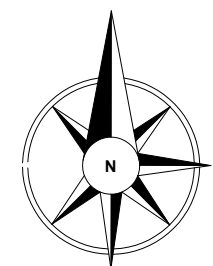
CHARLOTTETOWN PE
 VAUGHAN ON
 REDINGTON SHORES FL
 PLANO TX

WWW.IBSTOREY.COM

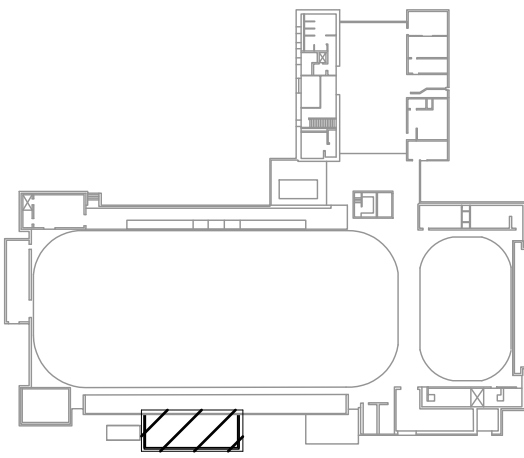
STAMP

DRAWING NUMBER 24021 MP401	
DRAWING NAME PLANT ROOM COOLING PIPING LARGE SCALE VIEWS	
CLIENT COLUMBUS PARKS & RECREATION	
PROJECT HAMILTON CC & ICE ARENA PLANT CONVERSION	
DRAWN BY H.DHAMELIYA	CHECKED BY J.RITCHIE
DATE 06-DEC-24	REVISION 2.0
SHEET SIZE C	SHEET NO. 2 OF 2

24021 MP401

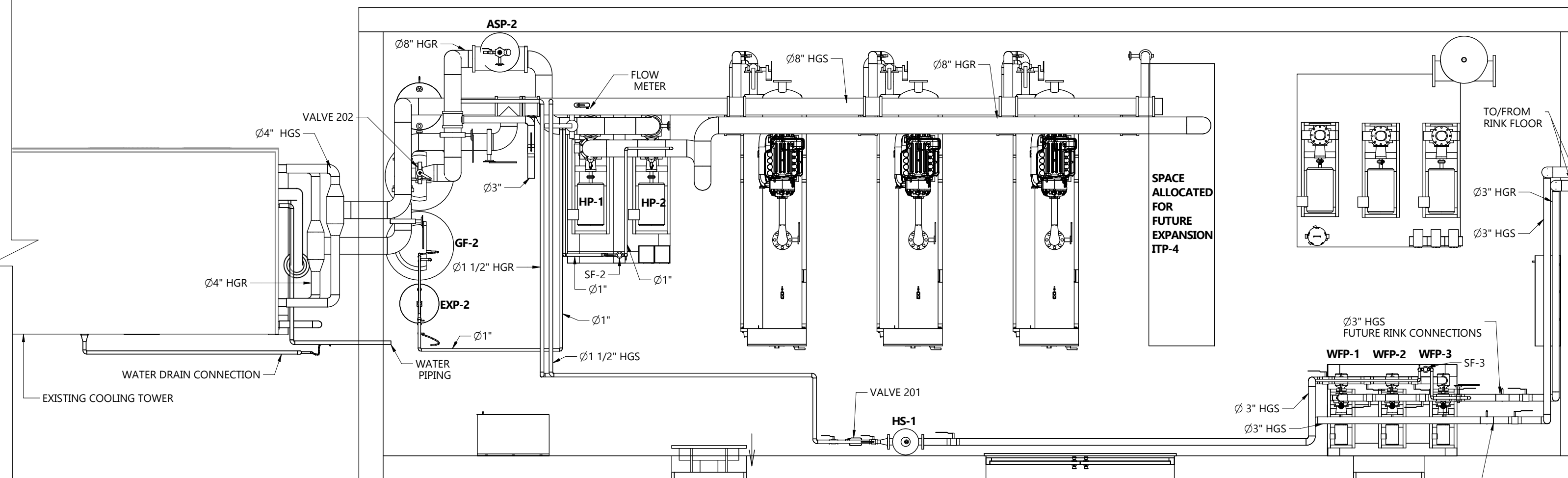


SITE KEY



SECTION VIEW E-E
MP403 (2,A3)

SECTION VIEW F-F
MP403 (2,B5)



HEATING PIPING PLAN
V2.0 SCALE 1/4"=1'-0"

SPACE
ALLOCATED
FOR
FUTURE
EXPANSION
ITP-4

TO/FROM
RINK FLOOR
Ø3" HGR
Ø3" HGS
Ø3" HGR
FUTURE RINK CONNECTIONS
WFP-1 WFP-2 WFP-3 SF-3
Ø3" HGR
Ø3" HGR
FUTURE RINK CONNECTIONS

NOTES

---	NEW
---	EXISTING

REFERENCE DEFINITION	
SHEET COLUMN	SHEET ROW
SHEET NUMBER	(#, X#)

COPYRIGHT AND DISCLAIMER
THIS WORK IS THE SOLE PROPERTY OF I.B. STOREY INC AND IS INTENDED SOLELY FOR THE INFORMATION OF THE CLIENT. ALL RIGHTS RESERVED. THE WORK MAY NOT BE REPRODUCED OR DISTRIBUTED, WHOLE OR IN PART, WITHOUT THE PRIOR WRITTEN PERMISSION OF I.B. STOREY INC.
THIS DOCUMENT MAY NOT BE USED FOR ANY OTHER PROJECTS OR WITHOUT INVOLVEMENT OF I.B. STOREY INC. ANY USE WHICH A THIRD PARTY MAKES OF THE WORK, OR ANY RELIANCE ON OR DECISIONS TO BE MADE BASED ON IT, ARE THE RESPONSIBILITY OF SUCH THIRD PARTIES.

- NOT FOR CONSTRUCTION -
CONFIDENTIAL & PROPRIETARY

VER #	REVISIONS	DATE	BY
2.0	EO#805	06-DEC-24	H.D.
1.0	ISSUED FOR TENDER	08-NOV-24	H.D.



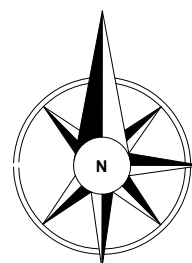
CHARLOTTETOWN PE
VAUGHAN ON
REDINGTON SHORES FL
PLANO TX

WWW.IBSTOREY.COM

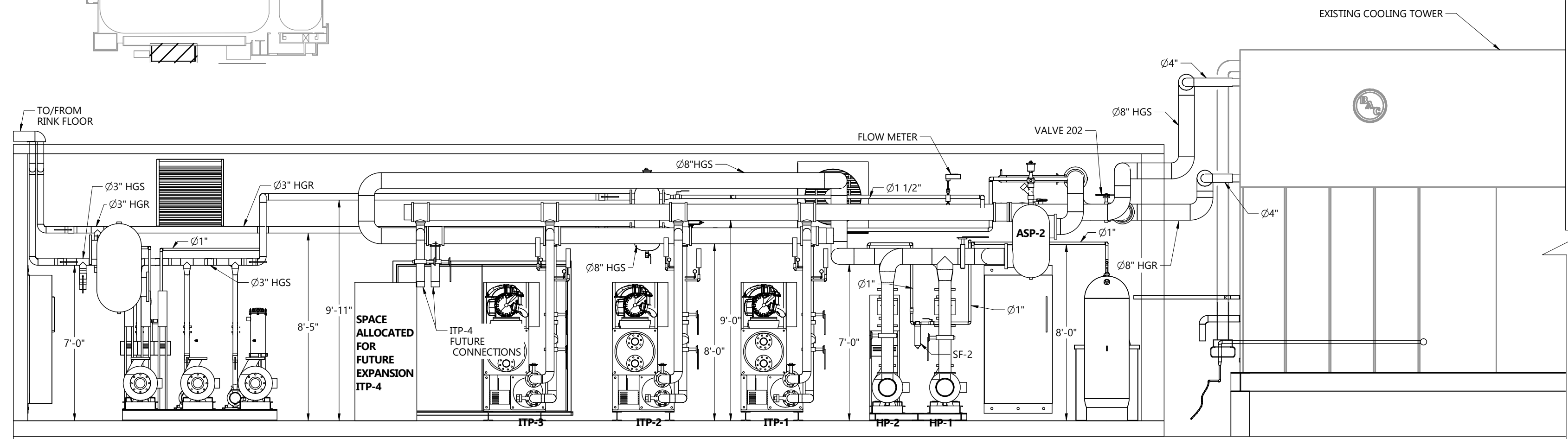
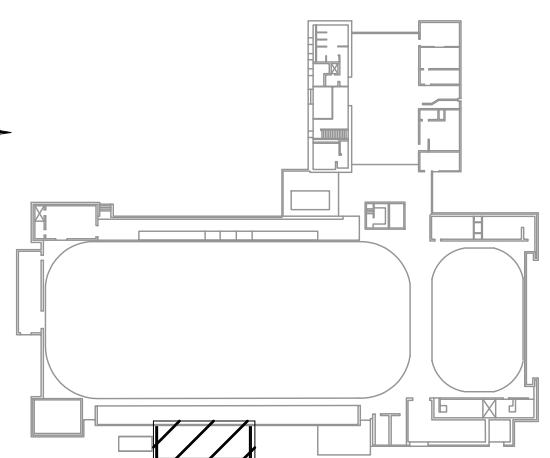
STAMP	
DRAWING NUMBER 24021 MP403	
DRAWING NAME PLANT ROOM WARM PIPING LARGE SCALE VIEWS	
CLIENT COLUMBUS PARKS & RECREATION	
PROJECT HAMILTON CC & ICE ARENA PLANT CONVERSION	
DRAWN BY H.DHAMELIYA	CHECKED BY J.RITCHIE
DATE 06-DEC-24	REVISION 2.0
SHEET SIZE C	SHEET NO. 1 OF 2

24021 MP403

HEATING PIPING PLAN

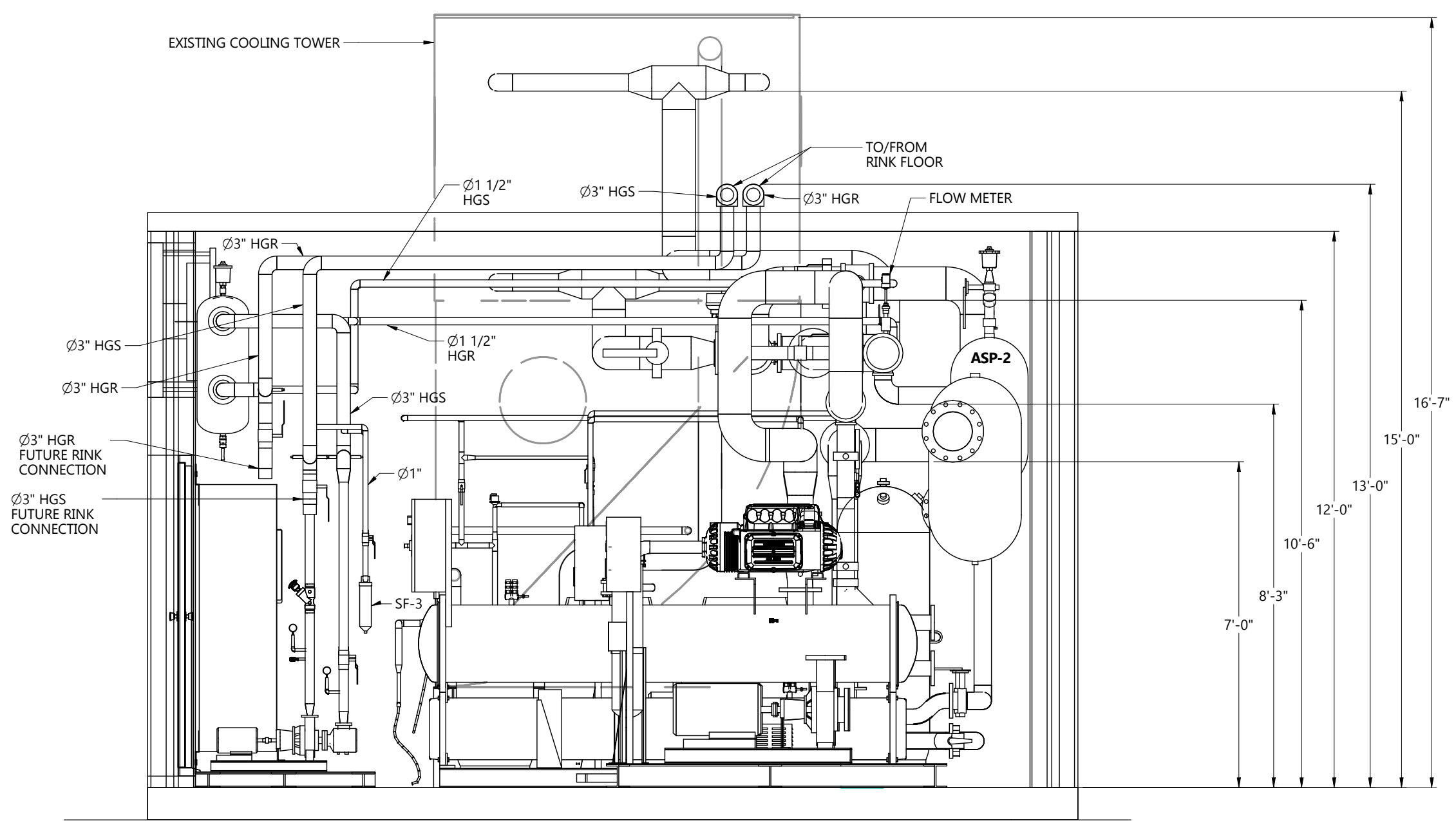


SITE KEY



SECTION VIEW E-E 180° (MP403.1.A2)

SCALE 1/4" = 1'-0"



SECTION VIEW F-F 90° (MP403.1.D2)

SCALE 3/8" = 1'-0"

HEATING PIPING SECTION VIEWS

NOTES

---	NEW
---	EXISTING

REFERENCE DEFINITION

SHEET COLUMN	SHEET ROW
(#)	(X#)

COPYRIGHT AND DISCLAIMER

THIS WORK IS THE SOLE PROPERTY OF I.B. STOREY INC AND IS INTENDED SOLELY FOR THE INFORMATION OF THE CLIENT. ALL RIGHTS RESERVED. THE WORK MAY NOT BE REPRODUCED OR DISTRIBUTED, WHOLE OR IN PART, WITHOUT THE PRIOR WRITTEN PERMISSION OF I.B. STOREY INC. THIS DOCUMENT MAY NOT BE USED FOR ANY OTHER PROJECTS OR WITHOUT INVOLVEMENT OF I.B. STOREY INC. ANY USE WHICH A THIRD PARTY MAKES OF THE WORK, OR ANY RELIANCE ON OR DECISIONS TO BE MADE BASED ON IT, ARE THE RESPONSIBILITY OF SUCH THIRD PARTIES.

- NOT FOR CONSTRUCTION -
CONFIDENTIAL & PROPRIETARY

2.0	EO#805	06-DEC-24	H.D.
1.0	ISSUED FOR TENDER	08-NOV-24	H.D.
VER #	REVISIONS	DATE	BY



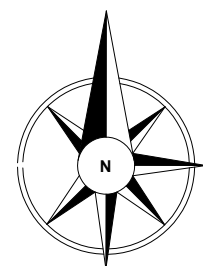
CHARLOTTETOWN PE
VAUGHAN ON
REDINGTON SHORES FL
PLANO TX

WWW.IBSTOREY.COM

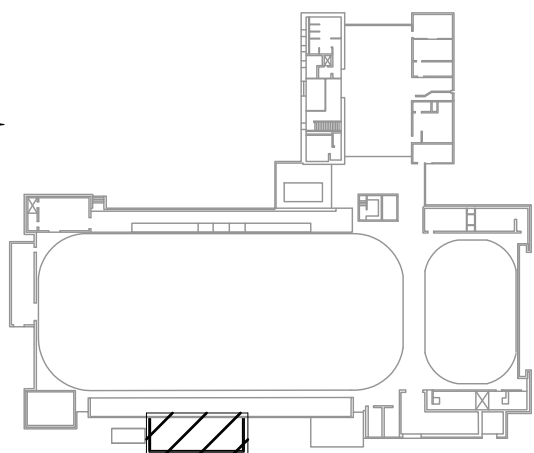
STAMP

DRAWING NUMBER		24021 MP403	
DRAWING NAME		PLANT ROOM WARM PIPING LARGE SCALE VIEWS	
CLIENT		COLUMBUS PARKS & RECREATION	
PROJECT		HAMILTON CC & ICE ARENA PLANT CONVERSION	
DRAWN BY	H.DHAMELIYA	CHECKED BY	J.RITCHIE
DATE	06-DEC-24	REVISION	2.0
SHEET SIZE	C	SHEET NO.	2 OF 2

24021 MP403



SITE KEY



NOTE

- PIPE CAPS FOR RELIEF MUST BE RATED FOR MINIMUM 300 PSI
- A LOCKING DEVICE SHALL BE INSTALLED TO ENSURE THE STOP VALVES ARE LOCKED IN THE OPEN POSITION WHEN THE RELIEF PIPING IS CONNECTED TO FUTURE ITP-4
- STOP VALVES TO BE LOCKED IN CLOSED POSITION BEFORE ADDITION OF ITP-4

NOTES

—	NEW
- - -	EXISTING

REFERENCE DEFINITION	
SHEET COLUMN	SHEET ROW
SHEET NUMBER	(#, X#)

COPYRIGHT AND DISCLAIMER

THIS WORK IS THE SOLE PROPERTY OF I.B. STOREY INC AND IS INTENDED SOLELY FOR THE INFORMATION OF THE CLIENT. ALL RIGHTS RESERVED. THE WORK MAY NOT BE REPRODUCED OR DISTRIBUTED, WHOLE OR IN PART, WITHOUT THE PRIOR WRITTEN PERMISSION OF I.B. STOREY INC. THIS DOCUMENT MAY NOT BE USED FOR ANY OTHER PROJECTS OR WITHOUT INVOLVEMENT OF I.B. STOREY INC. ANY USE WHICH A THIRD PARTY MAKES OF THE WORK, OR ANY RELIANCE ON OR DECISIONS TO BE MADE BASED ON IT, ARE THE RESPONSIBILITY OF SUCH THIRD PARTIES.

- NOT FOR CONSTRUCTION -
CONFIDENTIAL & PROPRIETARY

2.0	EO#805	06-DEC-24	H.D.
1.0	ISSUED FOR TENDER	08-NOV-24	H.D.
VER #	REVISIONS	DATE	BY



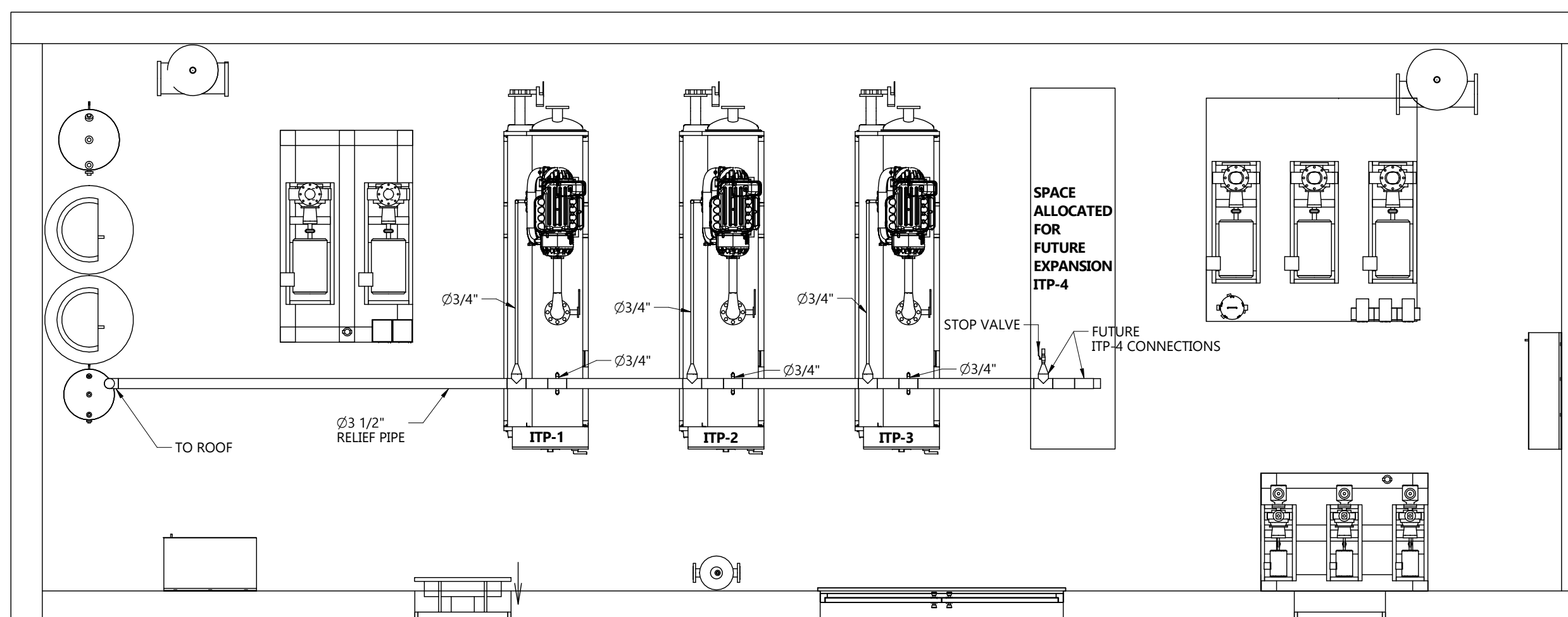
CHARLOTTETOWN PE
VAUGHAN ON
REDINGTON SHORES FL
PLANO TX

WWW.IBSTOREY.COM

STAMP	
DRAWING NUMBER 24021 MP405	
DRAWING NAME PLANT ROOM RELIEF PIPING LARGE SCALE VIEWS	
CLIENT COLUMBUS PARKS & RECREATION	
PROJECT HAMILTON CC & ICE ARENA PLANT CONVERSION	
DRAWN BY H.DHAMELIYA	CHECKED BY J.RITCHIE
DATE 06-DEC-24	REVISION 2.0
SHEET SIZE C	SHEET NO. 1 OF 3

G
SECTION VIEW G-G
MP405 (2,A4)

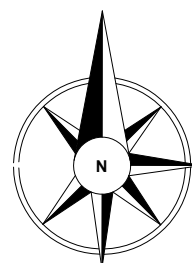
H
SECTION VIEW H-H
MP405 (3,B5)



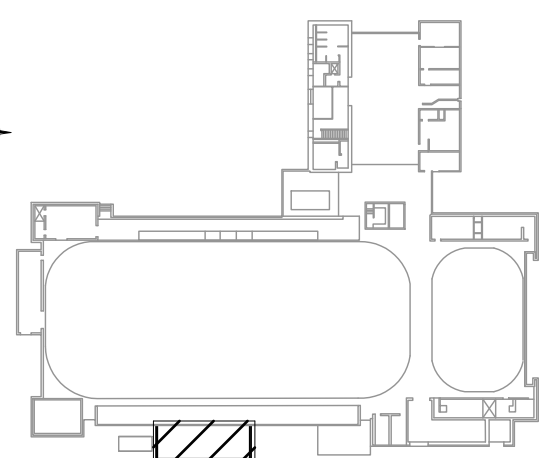
RELIEF PIPING PLAN
V2.0 SCALE 1/4"=1'-0"

RELIEF PIPING PLAN

24021 MP405



SITE KEY



NOTE

- PIPE CAPS FOR RELIEF MUST BE RATED FOR MINIMUM 300 PSI
- A LOCKING DEVICE SHALL BE INSTALLED TO ENSURE THE STOP VALVES ARE LOCKED IN THE OPEN POSITION WHEN THE RELIEF PIPING IS CONNECTED TO FUTURE ITP-4
- STOP VALVES TO BE LOCKED IN CLOSED POSITION BEFORE ADDITION OF ITP-4

NOTES

---	NEW
---	EXISTING

REFERENCE DEFINITION	
SHEET COLUMN	SHEET ROW
SHEET NUMBER	(#, X#)

COPYRIGHT AND DISCLAIMER
 THIS WORK IS THE SOLE PROPERTY OF I.B. STOREY INC AND IS INTENDED SOLELY FOR THE INFORMATION OF THE CLIENT. ALL RIGHTS RESERVED. THE WORK MAY NOT BE REPRODUCED OR DISTRIBUTED, WHOLE OR IN PART, WITHOUT THE PRIOR WRITTEN PERMISSION OF I.B. STOREY INC.
 THIS DOCUMENT MAY NOT BE USED FOR ANY OTHER PROJECTS OR WITHOUT INVOLVEMENT OF I.B. STOREY INC. ANY USE WHICH A THIRD PARTY MAKES OF THE WORK, OR ANY RELIANCE ON OR DECISIONS TO BE MADE BASED ON IT, ARE THE RESPONSIBILITY OF SUCH THIRD PARTIES.

- NOT FOR CONSTRUCTION -
CONFIDENTIAL & PROPRIETARY

VER #	REVISIONS	DATE	BY
2.0	EO#805	06-DEC-24	H.D.
1.0	ISSUED FOR TENDER	08-NOV-24	H.D.

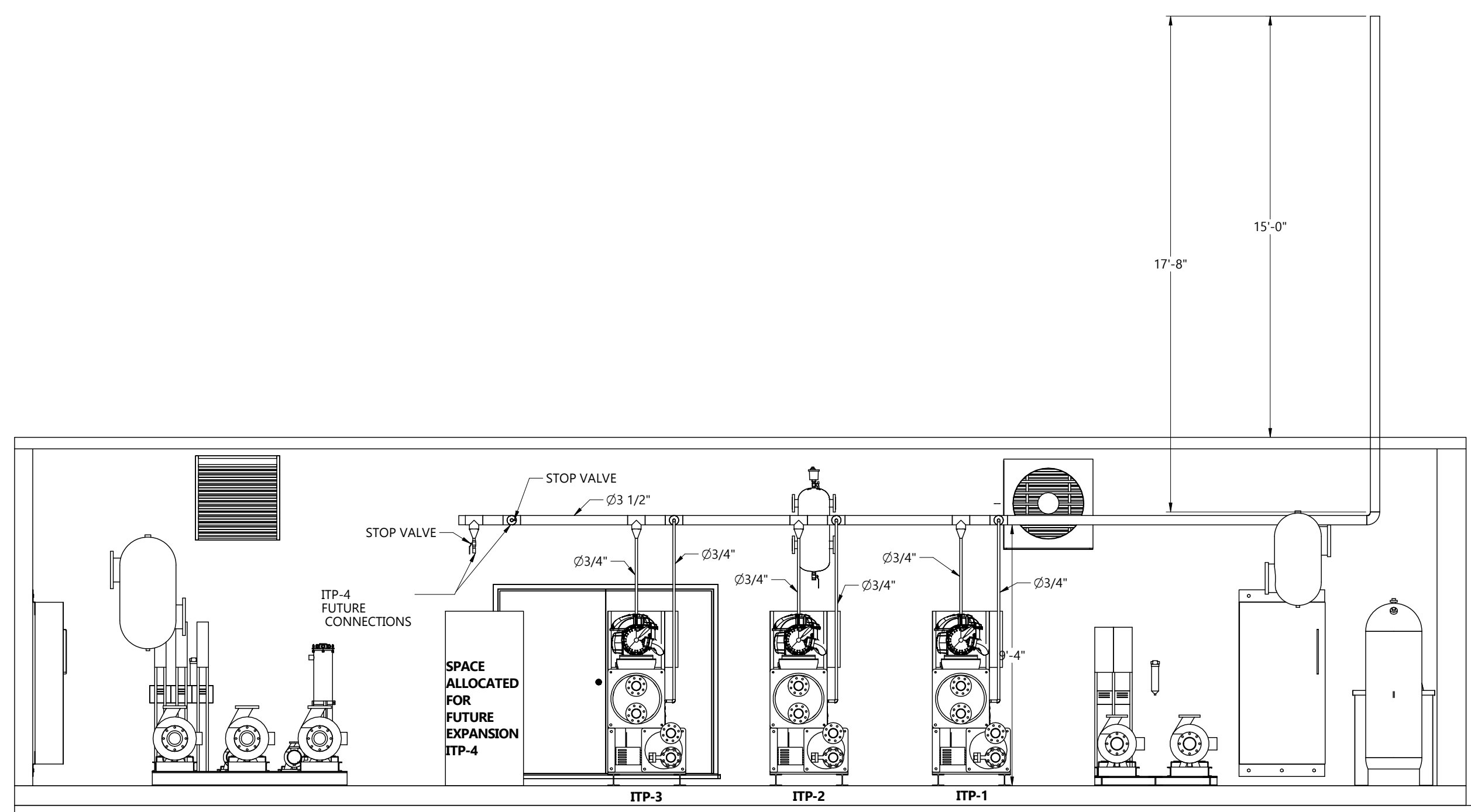


CHARLOTTETOWN PE
 VAUGHAN ON
 REDINGTON SHORES FL
 PLANO TX

WWW.IBSTOREY.COM

STAMP

DRAWING NUMBER 24021 MP405	
DRAWING NAME PLANT ROOM RELIEF PIPING LARGE SCALE VIEWS	
CLIENT COLUMBUS PARKS & RECREATION	
PROJECT HAMILTON CC & ICE ARENA PLANT CONVERSION	
DRAWN BY H.DHAMELIYA	CHECKED BY J.RITCHIE
DATE 06-DEC-24	REVISION 2.0
SHEET SIZE C	SHEET NO. 2 OF 3



SECTION VIEW G-G @ 180° (MP405,1,A2)
 SCALE 1/4"=1'-0"

RELIEF PIPING SECTION VIEWS

24021 MP405

NOTES

---	NEW
---	EXISTING

REFERENCE DEFINITION	
SHEET COLUMN	SHEET ROW
SHEET NUMBER	(#, X#)

COPYRIGHT AND DISCLAIMER
 THIS WORK IS THE SOLE PROPERTY OF I.B. STOREY INC AND IS INTENDED SOLELY FOR THE INFORMATION OF THE CLIENT. ALL RIGHTS RESERVED. THE WORK MAY NOT BE REPRODUCED OR DISTRIBUTED, WHOLE OR IN PART, WITHOUT THE PRIOR WRITTEN PERMISSION OF I.B. STOREY INC.
 THIS DOCUMENT MAY NOT BE USED FOR ANY OTHER PROJECTS OR WITHOUT INVOLVEMENT OF I.B. STOREY INC. ANY USE WHICH A THIRD PARTY MAKES OF THE WORK, OR ANY RELIANCE ON OR DECISIONS TO BE MADE BASED ON IT, ARE THE RESPONSIBILITY OF SUCH THIRD PARTIES.

- NOT FOR CONSTRUCTION -
 CONFIDENTIAL & PROPRIETARY

2.0	EO#805	06-DEC-24	H.D.
1.0	ISSUED FOR TENDER	08-NOV-24	H.D.
VER #	REVISIONS	DATE	BY



CHARLOTTETOWN PE
 VAUGHAN ON
 REDINGTON SHORES FL
 PLANO TX

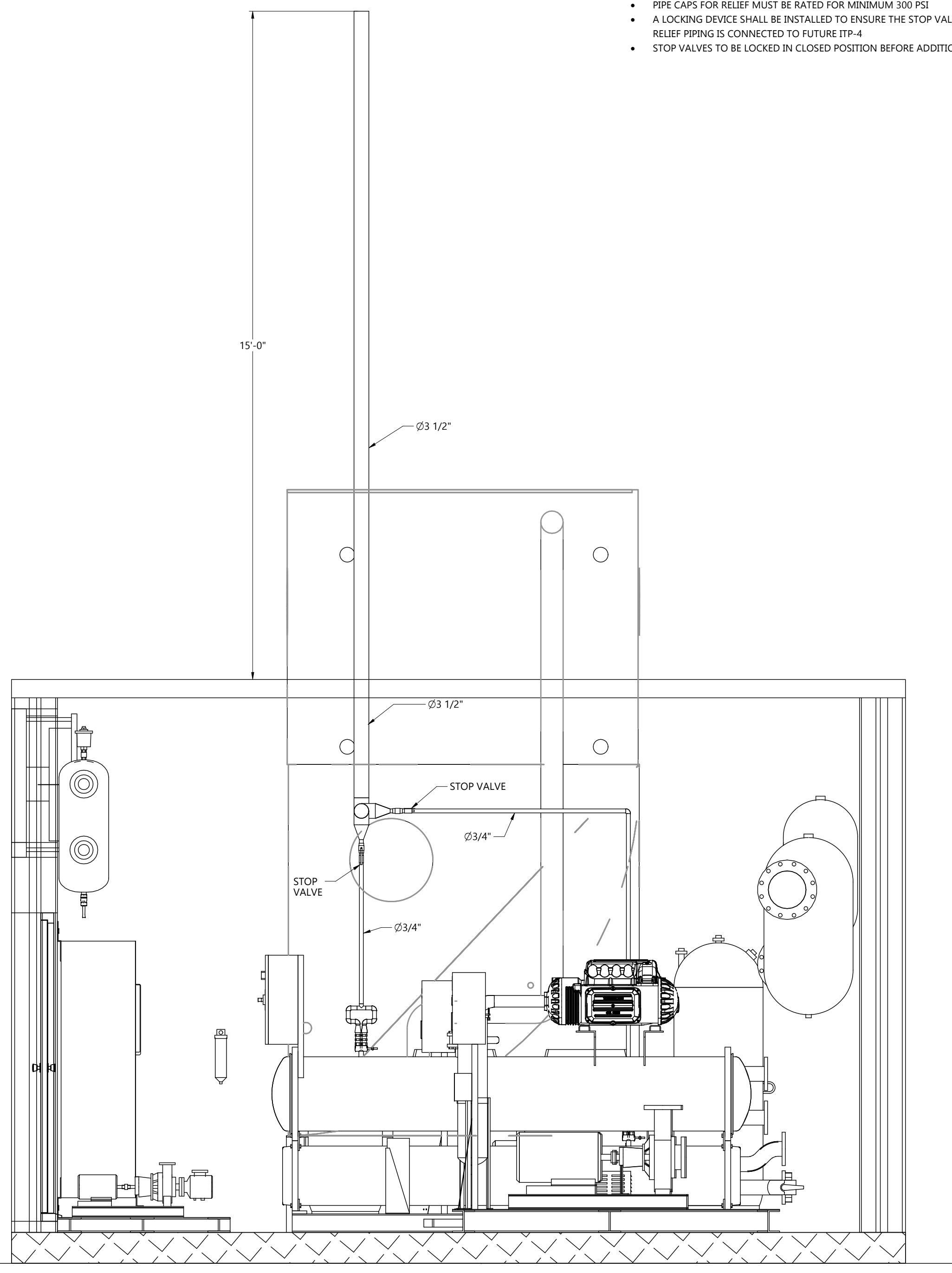
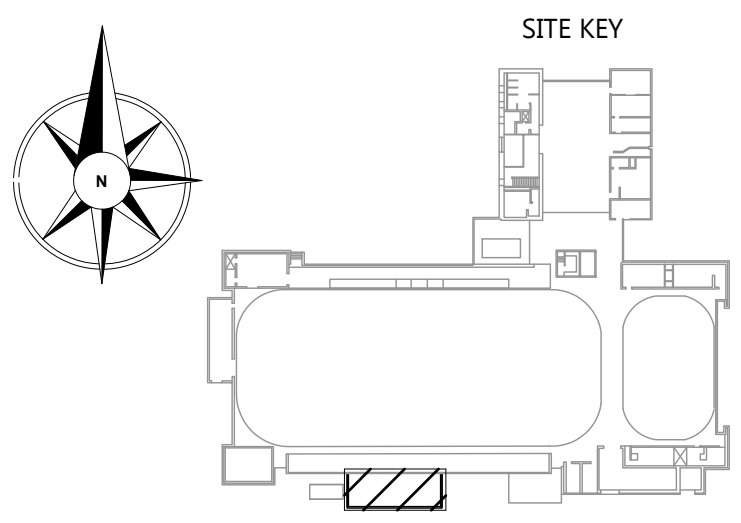
WWW.IBSTOREY.COM

STAMP

DRAWING NUMBER 24021 MP405	
DRAWING NAME PLANT ROOM RELIEF PIPING LARGE SCALE VIEWS	
CLIENT COLUMBUS PARKS & RECREATION	
PROJECT HAMILTON CC & ICE ARENA PLANT CONVERSION	
DRAWN BY H.DHAMELIYA	CHECKED BY J.RITCHIE
DATE 06-DEC-24	REVISION 2.0
SHEET SIZE C	SHEET NO. 3 OF 3

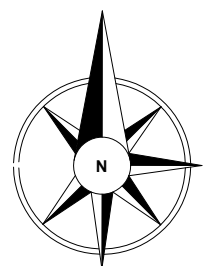
NOTE

- PIPE CAPS FOR RELIEF MUST BE RATED FOR MINIMUM 300 PSI
- A LOCKING DEVICE SHALL BE INSTALLED TO ENSURE THE STOP VALVES ARE LOCKED IN THE OPEN POSITION WHEN THE RELIEF PIPING IS CONNECTED TO FUTURE ITP-4
- STOP VALVES TO BE LOCKED IN CLOSED POSITION BEFORE ADDITION OF ITP-4

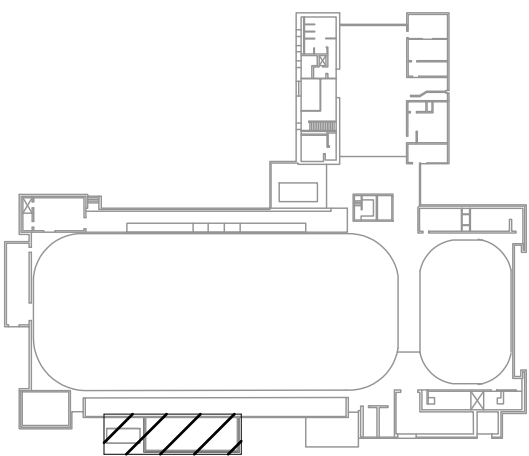


SECTION VIEW H-H @ 90° (MP405.1.D2)
 SCALE 1/2"=1'-0"

RELIEF PIPING SECTION VIEWS

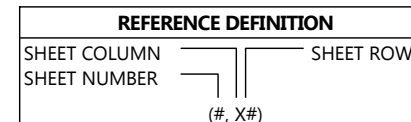


SITE KEY



EQUIPMENTS PHYSICAL LOADS			
TAG	DESCRIPTION	WEIGHT (LBS)	NOTES
ITP-1	ICE REFRIGERATION PKG	5,600	-
ITP-2	ICE REFRIGERATION PKG	5,600	-
ITP-3	ICE REFRIGERATION PKG	5,600	-
ITP-4*	ICE REFRIGERATION PKG	5,600	-
CP-1	COLD FLOOR PUMP	1,412	-
CP-2	COLD FLOOR PUMP	1,412	-
CP-3	COLD FLOOR PUMP	1,412	-
HP-1	CONDENSER PUMP	1,082	-
HP-2	CONDENSER PUMP	1,082	-
WFP-1	WARM FLOOR PUMP	204	-
WFP-2	WARM FLOOR PUMP	204	-
WFP-3	WARM FLOOR PUMP	204	-
CT-1	EXISTING COOLING TOWER	33,380	-
EF-1	EXHAUST FAN	83	WALL MOUNTED
EL-1	EXHAUST LOUVER	28	WALL MOUNTED
IL-1	INTAKE LOUVER	28	WALL MOUNTED

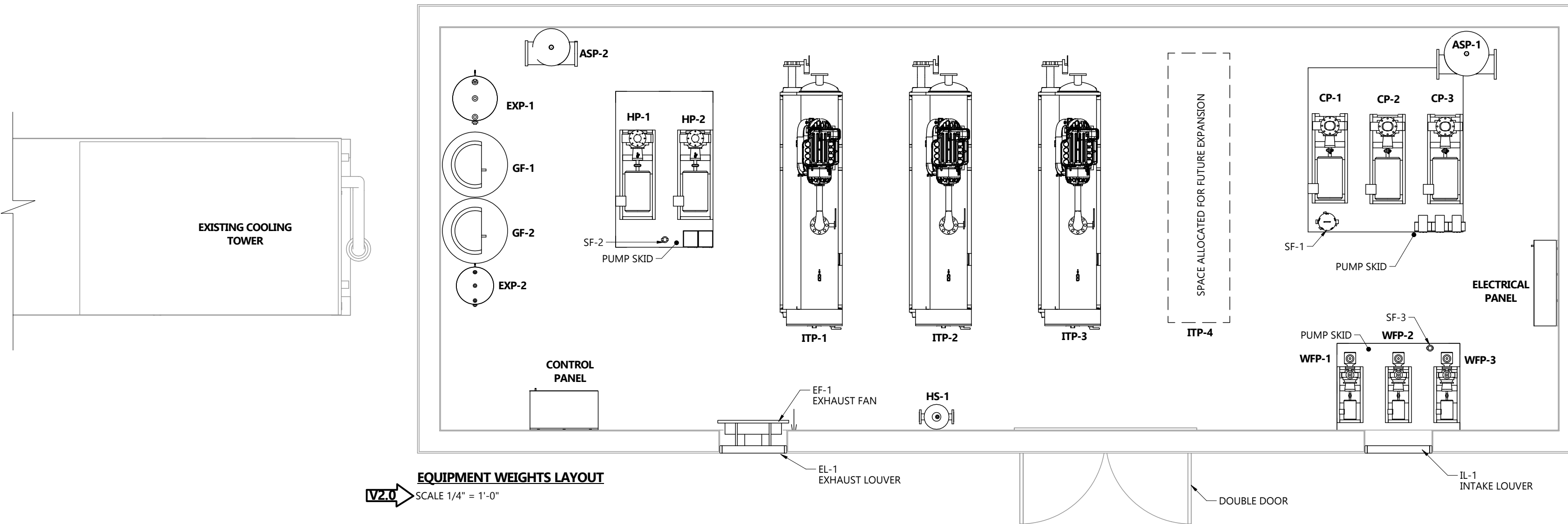
PLANT ROOM EQUIPMENTS PHYSICAL LOADS			
TAG	DESCRIPTION	WEIGHT (LBS)	NOTES
EXP-1	COLD SIDE EXPANSION TANK	1356	-
EXP-2	WARM SIDE EXPANSION TANK	559	-
ASP-1	COLD SIDE AIR SEPERATOR	1241	SUSPENDED
ASP-2	WARM SIDE AIR SEPERATOR	715	SUSPENDED
SF-1	COLD SIDE STREAM FILTER	144	-
SF-2	WARM SIDE STREAM FILTER	21	PIPE MOUNTED
SF-3	WARM FLOOR SIDE STREAM FILTER	21	PIPE MOUNTED
GF-1	COLD SIDE GLYCOL FEEDER	983	-
GF-2	WARM SIDE GLYCOL FEEDER	983	-
HS-1	WARM FLOOR HYDRAULIC SEPERATOR	185	SUSPENDED



COPYRIGHT AND DISCLAIMER
 THIS WORK IS THE SOLE PROPERTY OF I.B. STOREY INC AND IS INTENDED SOLELY FOR THE INFORMATION OF THE CLIENT. ALL RIGHTS RESERVED. THE WORK MAY NOT BE REPRODUCED OR DISTRIBUTED, WHOLE OR IN PART, WITHOUT THE PRIOR WRITTEN PERMISSION OF I.B. STOREY INC.
 THIS DOCUMENT MAY NOT BE USED FOR ANY OTHER PROJECTS OR WITHOUT INVOLVEMENT OF I.B. STOREY INC. ANY USE WHICH A THIRD PARTY MAKES OF THE WORK, OR ANY RELIANCE ON OR DECISIONS TO BE MADE BASED ON IT, ARE THE RESPONSIBILITY OF SUCH THIRD PARTIES.

- NOT FOR CONSTRUCTION -
 CONFIDENTIAL & PROPRIETARY

VER #	REVISIONS	DATE	BY
2.0	EO#805	06-DEC-24	H.D.
1.0	ISSUED FOR TENDER	08-NOV-24	R.T.



EQUIPMENT WEIGHTS LAYOUT
 SCALE 1/4" = 1'-0"

- NOTES:**
- * FOR FUTURE EXPANSION.
 - ALL PIPING HIDDEN FOR CLARITY.

EQUIPMENT WEIGHTS LAYOUT

DRAWING NUMBER		24021 S-703	
DRAWING NAME		EQUIPMENT WEIGHTS LAYOUT	
CLIENT		COLUMBUS PARKS & RECREATION	
PROJECT		HAMILTON CC & ICE ARENA PLANT CONVERSION	
DRAWN BY	H.DHAMELIYA	CHECKED BY	J.RITCHIE
DATE	06-DEC-24	REVISION	2.0
SHEET SIZE	C	SHEET NO.	1 OF 1

24021 S-703

3

4

5